



# CATSBY+

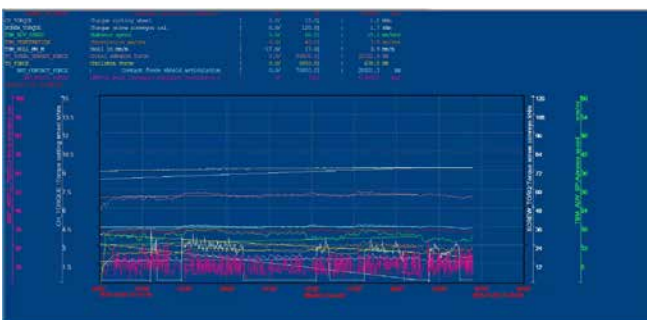
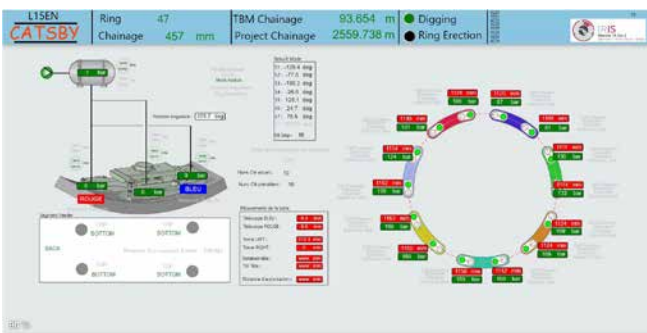
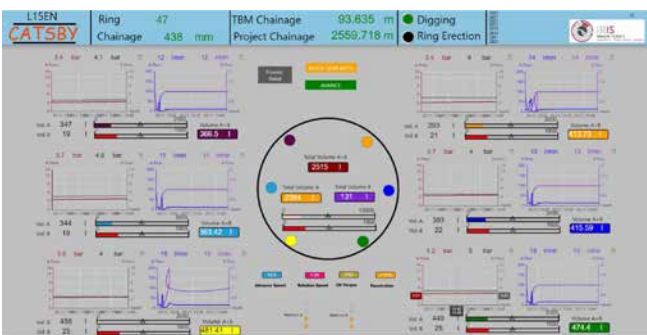
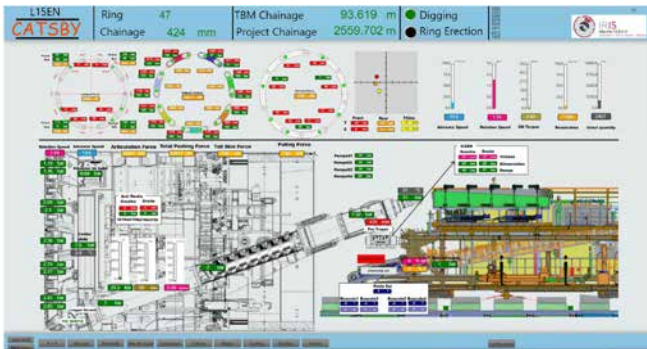
## Enhancing Data Acquisition for Construction Sites

CATSBY+ is an advanced digital solution designed to enhance TBM operations by directly connecting to the machine's PLC (Programmable Logic Controller). It provides real-time data acquisition, visualization, and analysis of key operational parameters, enabling site teams to improve control, performance, and decision-making throughout tunneling operations.



### Key benefits

- ± Real-time supervision of TBM operations through direct PLC connection
- ± Continuous visualization of critical machine parameters
- ± Integrated alert system for early detection of malfunctions
- ± Reduced downtime through preventive maintenance
- ± Improved safety with clear graphical dashboards
- ± Optimized performance thanks to real-time data analysis
- ± Better coordination between underground and surface systems
- ± Lower operational costs and increased productivity
- ± Standardized shift and week reporting for field teams
- ± Improved communication and traceability between operational teams



## Main Features

### Real-Time Supervision

Direct connection to TBM PLC systems for continuous real-time visualization of machine status and key components.

### Alert and Notification System

Detection of malfunctions and critical states with real-time notifications for preventive interventions.

### Control and Monitoring

Monitoring key parameters such as speed, pressure, and operational conditions directly from the TBM cabin.

### Graphical Visualizations

Interactive dashboards and visual displays to enhance understanding and safety.

### Efficiency Optimization

Real-time adjustments and continuous data analysis to maximize productivity.

### Downtime Reduction

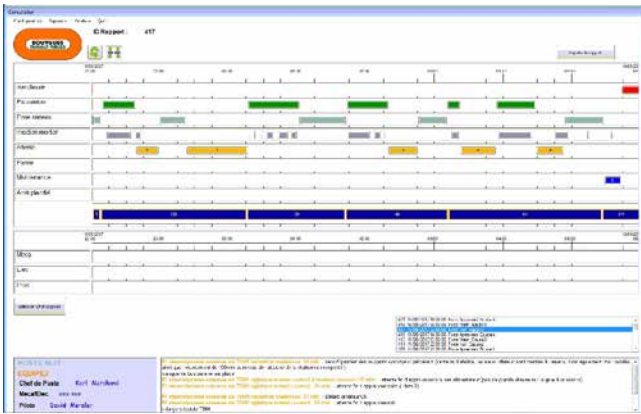
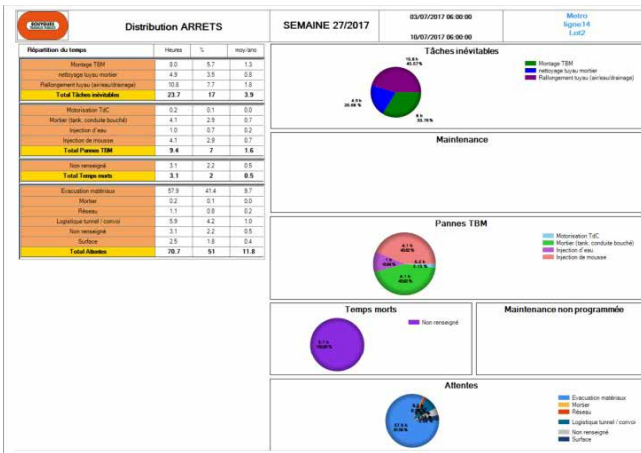
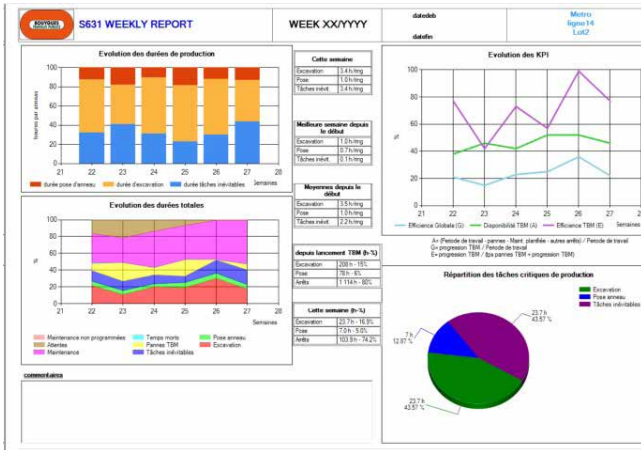
Anticipation of failures and improved maintenance planning.

### Data Integration

Collection of data from surface systems (STP, electricity, water consumption).

### Coordination and Safety

Enhanced coordination between underground and surface operations.



## Shift & Week Report Module

### Standardized Operational Reporting

CATSBY includes a dedicated application for creating detailed shift and week reports during TBM operations. This module allows field teams to record daily activities, incidents, and observations in a structured and standardized way.

### Event Characterization (AFTES Standard)

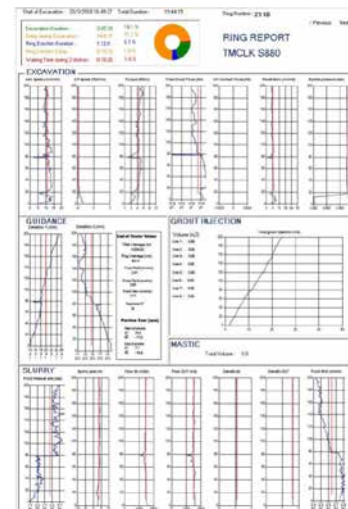
All events are characterized according to the standards of the French Association of Tunnels and Underground Space (AFTES), ensuring consistency, traceability, and compliance with industry best practices.

### Operational Continuity

Shift and week reports facilitate smooth transitions between teams by providing clear documentation of completed tasks, encountered issues, and required follow-up actions.

### Improved Communication and Management

The reporting module enhances communication between field teams, site management, and engineering teams, supporting better decision-making and intervention planning.



Adresse  
Contact

[www.tunnelbytp.com](http://www.tunnelbytp.com)